

FREE! Please take a copy

C
R
O
S
S

A
L
K



Lillington Parish Church
St Mary Magdalene's
Magazine

NOVEMBER 2023

From the Vicar

Dear Friends,

November has come again and with it the season of Remembrance. The service to remember those who gave their lives for their country will be held on Remembrance Sunday 12th November. As usual we will adjust the timings of the morning services so that the Communion service is at 10.00am followed by the memorial service outside at 11.00am. Many people from the local community gather for this and it is always a good opportunity once again for the church fellowship to be a visible local presence.



Then in the evening of the 12th we will have our annual memorial service for those who have been bereaved in the parish over the last 12 months which will take place at 6.00pm. And again it will be an opportunity for us all to gather and remember loved ones, to light candles in the darkness as signs of the hope of resurrection that we hold in our hearts and to trust them to God's continuing care.

The act of remembrance is central to our faith – “do this in remembrance of me.” The Eucharist is a weekly reminder that God came to live as one of us and to show the full extent of his love for us in the giving of himself on the cross. Over and

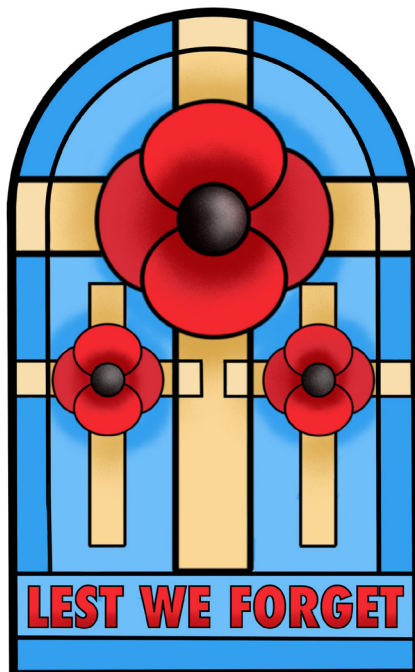
over again we remember his love by sharing in his body and blood.

For much of the time our lives can feel very uneventful and routine. But there are occasions when our world is turned upside down by the birth of a child, the loss of a job, an illness or a bereavement. When we are at our most needy God often gains entrance in our lives to help and to heal. Whenever God touches us it is important to treasure it and remember it for that way the relationship is sustained and strengthened.

May each of us in remembering our loved ones this November and remember also the love God has for us and his longing to make us whole.

God bless,

William



Interview with our new curate - Revd Cerys Smith

Hello Cerys. Thank you for taking the time to talk to us today and give us more of an insight into your background and vocation. You first came to us in July. How does it feel to be a firm fixture now at St Mary Magdalene's - how has it been so far?

Yes, I definitely feel like a firm fixture! Everyone has been really welcoming and friendly, which has made things easy, so yes, it's really good.

You spent 3 months in Rwanda. What were you doing there and how did the experience shape who you are now?

I went to Rwanda as my parish church supported a diocese there (Shyogwe), which helped do practical things for the community, such as building a health centre as well as teaching. I taught English in a range of schools and colleges. The experience challenged me, as it was the first time I had been completely on my own and at the age of 18, the first time I had been away from my family, including my twin sister with whom I'm very close. On the plus side, I got to know a lot of lovely people from the local community, as well as various people from other international charities including VSO. In addition, the experience challenged my faith because services were in the national language, Kinyarwanda. Despite this, there was a lot to enjoy including much lovely music; this plus translation of sermons and common faith brought us together. At one point, the pastor asked me 'When did you

accept Jesus Christ as your saviour?’ This really made me think about what I believe; why and where that belief came from. At that time this wasn’t something I could really talk



about, and I have reflected on my answer so many times since.

We know that you then worked as project officer for various UK charities. Please can you tell us more about that?

I did project co-ordination plus administration following my degree. I started off working for the Big Lottery Fund – looking at various charities

and evaluating their needs; this led me to want to work for charities. I worked for Community Service Volunteers (now called Volunteering Matters), then became information officer for The Alzheimer’s Society. I then returned to university to do a Master of Science in International Development specialising in ‘Conflict Security and Development’.

I moved to Coventry in 2017 to be an intern at Coventry Cathedral, in their reconciliation ministry. I loved the work and for the first time felt a strong calling and a feeling that I was in the right place and utilising my skills, gifts and knowledge. After this I got a job within the diocese and trained as a mediator with Bridge Builders (a Christian charity).

Turning back to the parish of Lillington and our church. What if anything has surprised you so far about Lillington/ the church and role?

The surprise was that I ended up here! And it has turned out to be a lovely surprise. It has been interesting to find out the different ways people want to worship and use the church spaces. The amount of congregational involvement has been a surprise too, as has the congregation's openness and positivity about forthcoming changes. With regard to Lillington, it has been interesting to learn more about the people and geography of the area and learn more about people's differing contexts and needs.

Please could you sum up for us your hopes for the future Cerys? What do you hope to achieve during your time with us and beyond? Sorry – that's a big question!

A curacy is a learning experience – it's how we learn to run our own churches. I hope to learn as much as I can, develop as a clergyperson and prepare for becoming a parish priest with all that is involved; all whilst still serving the local community. In short, I hope to love and serve this community and that of St James's in any way I can.

Thank you Cerys, for your time and for the positive impact you have already made and are continuing to make in our little parish church.

Sara Snatt



This Christmas we are supporting the Lillington branch of the Leamington and Warwick Foodbank in a different way. There will be three boxes available for your donations:

Church | Octagon | Outside the Vicarage

Please support this initiative if you can. All donations collected will be taken to the Foodbank in Lillington on Tuesday 12th December so the last day for receipt of contributions is Sunday 10th December. Miriam Bowen has requested a slightly different emphasis on donations this year as the Foodbank needs stock to support their needy clients during January and February 2024. Donations requested are featured here, and the list will also be displayed on the outside of all donation boxes.

With thanks for your continued support.

Christine Butler and the Community Involvement Team

Reverse ADVENT CALENDAR

Please check with us to find out our opening times during December. In order to distribute before Christmas, we need Reverse Calendars to be delivered to us by Monday 17th.
 Email address: info@warwickdistrict.foodbank.org.uk
 Telephone Number: 07850 293383

1 Toilet roll	2 Small bag of sugar	3 Instant noodles	4 Chocolate	5 Soft drink	6 Sponge pudding
7 Mayonnaise	8 Instant mash	9 Savoury snacks	10 Tinned fruit	11 Tinned veg	12 Tinned meat
13 Brown sauce	14 Ketchup	15 Gravy granules	16 Selection box	17 Jam	18 Pasta sauce
19 Washing up liquid	20 Deodorant	21 Shampoo	22 Lipsalve	23 Shaving foam	24 Small pack of tissues

warwickdistrict.foodbank.org.uk
 Registered Charity in England & Wales 1180705



Dear St Mary Magdalene's Church,

As a trusted partner and supporter of the Lillington Community Pantry, we wanted to start discussing with you the support that we aim to provide to our members this Christmas, as we enter the colder months.

Christmas is a particularly challenging time for many of the families we support. With winter in full force, soaring energy prices and the expectations and pressures around presents, Christmas isn't always "The Most Wonderful Time of the Year" in the words of Andy Williams. For many of our members, family breakdown, social isolation, bereavement and of course financial pressures often take over at this time of year; removing the joy and excitement many feel. Here at the pantry, we want to try and alleviate some of the pressure this Christmas and to do this, we need your support.

We really appreciate the support you have provided to the pantry so far. Last year, we provided 120 Christmas Hampers to individuals and families in need. Members paid £20 for a hamper containing Christmas food to the value of £60. Hampers included meat, fresh fruit and vegetables, cheese, christmas puddings, as well as all the trimmings and Christmas food treats a family could need for the festive period.

This year, we hope to provide 150 Christmas Hampers for families in Leamington and Warwick facing food poverty. On average, we support between 120 and 130 families a week,

however we know this will increase over the winter months. To provide these vital parcels, we need your support.

We would be grateful if you can consider supporting us this Christmas. We are in need of donations of Christmas food, financial donations or any other creative way to support families this festive period. We would also love to invite you to be part of the process, if you would like; we need help packing and distributing them, so if you would like to be involved in this please contact one of the team on

Lillington@thecommunitypantry.org.uk

Lillington Community Pantry is a lifeline for many in Leamington and Warwick and with your help, we want to make life that little bit easier for families this Christmas.

The Community Pantry Team



Reverse Advent 2023

This year we are supporting the Lillington Community Pantry (Pound Lane) with our 2023 Reverse Advent project. Please read the separate letter (pages 8-9) from The Community Pantry Team regarding their plans for Christmas Hampers.

Reverse Advent Calendar
A Church-Wide Effort to Help Those in Need This Holiday Season!



We will also continue to support the Lillington branch of the Leamington and Warwick Foodbank – by direct donations into boxes available in church, in the Octagon and outside the Vicarage. Details about that are featured in a separate article (page 7).

Please feel free to choose which initiative you would like to support this year – or both if you wish!

Here are the details for Reverse Advent

Strong brown paper carrier bags will be available for you to fill with your contributions – or you can use a Christmas gift bag you already have at home. Decorating the plain carrier bags with festive colour always proves popular – so please do join in with this idea if you can.

Reverse Advent Bags will be available in church for collection

during November, which you can take home and fill up, ready for Christmas. Filled bags will be received back into church at all services on Sunday 10th December. If you are worshipping on-line or are unable to deliver your filled bag to church – please do get in touch with me and I will make arrangements to deliver and collect your bag.

How it works...

Many of us have an Advent calendar with a chocolate or little toy for each day. With the Reverse Advent Calendar, you GIVE a little something for each day. Please fill your bag for our Community Pantry and at the same time your help will support what "Love Lillington" is doing in our Community.

DONATIONS NEEDED BY THE PANTRY : Cranberry Sauce, Gravy Granules, Christmas Puddings, Christmas Chocolates, Chocolate Puddings/Yule Logs, Christmas Biscuits/ Cake, Tinned Fruit, Tinned Custard, Cream Crackers, Hot Chocolate, Mini-marshmallows, Mince Pies, Non-alcoholic drinks, Stuffing, Bread Sauce, Christmas Crackers (non-edible kind) Supermarket Gift Cards. (the hampers will also include meat, fresh fruit, and vegetables and cheese – these items are purchased by Pantry staff by funds raised).

At the end of Advent these will be fantastic bags of gifts for us to deliver to the Pantry – assisting them in providing well stocked hampers for the community in need in Lillington and Leamington Spa.



Lillington Parish Church
Knowing • Growing • Going

Christine Butler

j.butler1christine@gmail.com or
07963 229756

Church Flowers

Wendy Shear, who has been the Co-ordinator of the Church's Flower Guild for some twenty-five years, is proposing to retire at the end of the year so we are naturally anxious to recruit a



new organiser so as to maintain this fine tradition.

The presence of flowers in the Church is always uplifting and serves to remind us of God's bounty and the wonderful works of nature which are available to us.

Before the 16th century, there is almost no information to be found that flowers were used for decorative purposes -

but there is abundant proof that flowers were employed in medicine, surgery, and cooking. Only the works of early poets and ancient accounts provide perhaps the only evidence that flowers, for their beauty and scent, were used at all.

As you may have guessed, the use of flowers for decoration appears to have started with religious gatherings. From ancient accounts, we have learned that priests wore garlands of roses at summer festivals. Torches carried in religious processions were decorated with flowers and the streets of the path of a religious procession were often strewn with flowers.

Church decorations and the use of flowers on ceremonial occasions were of a particularly lavish nature during the reigns of Kings Henry VII and Henry VIII. It would be fascinating to know how the people of Lillington decorated their Church at that time.

If you value flowers and feel you could make a contribution to this tradition, please contact Churchwarden Graham Cooper (tel 01926 426942; e-mail grahamx.cooper@tiscali.co.uk). You could put your own "stamp" on the job and remodel it to suit your own requirements!

With thanks and good wishes,

Graham E. Cooper



CHRISTMAS FAIR 2023

**A Christmas treat for all the family!
Join us at St Mary Magdalene's Church
Vicarage Road, Lillington**



**SATURDAY
25TH NOV 2-4 pm**

**Santa's Grotto Christmas crafts
Christmas Cafe Grand Raffle
Children's Activities Tombolas
And much more!**



Warwickshire County Council Youth Service

The last month has been an exciting time for the WCC Youth Service staff based at Lillington Youth Centre, as the team won the Partnership and Team award at the WCC Children's Service's Awards. This was for a project that involved sports, art and bringing together local young people and newly arrived in the UK young people. A fairly reluctant and uncomfortable team went to the ceremony (youth workers don't like these kind of things) but we ended up enjoying ourselves.

In early October the Youth Centre celebrated 60 years. The Youth Centre was the result of the Arbermale Report in 1960 which called for young people to have spaces for themselves so they could grow and flourish. It's amazing in that for the whole of its existence it had been there for young people.



Young people organised a night of celebration with speeches, bands playing and lots of cake. It was so lovely to be supported by members of the community who also came to support the evening. A particular delight was having previous youth club members come along with their children. It is such a privilege to part of generations of youth work support. Looking forward to another 60 years!

**Hollie Hutchings, Team Manager, Targeted Youth Support
Warwickshire County Council**

Gaming Together

On Saturday 23rd September, a group of us hosted a board games day in the Octogon. It was great fun and we raised lots of money for the Church.

On Saturday morning, we loaded up our car with board games. We tried hard to think about games that everyone would enjoy as well as games for all ages and levels of experience. When we arrived at the Octogon, some other church members had brought games too and we set up a display so people could choose games they wanted to play. We made a separate display of games for little ones to choose.

The day went really well with lots of people coming and going. I enjoyed teaching people new games and helping them develop better tactics for games they already knew. Lots of different people came: people from my class, from my dad's racing group, some families who lived nearby and lots of people from church.

There were loads of different types of food ranging from cakes to sandwiches and sausage rolls, all made by the excellent chefs of the church.

Everyone had lots of fun and in total we raised £128 for Chairs for Church. We're already looking forward to the next one... hope to see you there!

Jacob Smith
Age 10



Footsteps of faith

Footsteps of faith on the
'Highway of grace'
Eyes fixed on Jesus
Running the race

All of our worship
All of our praise
High King of Heaven
Ancient of Days

Forward we travel
Christ sets the pace
Onward He calls us
Onward in faith

Believing; receiving
Speaking His Name
Sure of His mercy
When we are to blame

Jesus our Saviour
Calls us to come
Into the Kingdom
Where He is the Son ...

Footsteps of faith on the
'Highway of grace'
Eyes fixed on Jesus
Running the race

Son of the Father
Counsellor; King
His is the glory
To Him we will bring ...

Forward we travel
Christ sets the pace
Onward He calls us
Onward in faith

*"For you created my inmost being; you knit me together
in my mother's womb. I praise you because I am fearfully and
wonderfully made; your works are wonderful, I know that full
well. My frame was not hidden from you when I was made in
the secret place, when I was woven together in the depths of
the earth.
Your eyes saw my unformed body; all the days ordained for me
were written in your book before one of them came to be.
How precious to me are your thoughts, God!
How vast is the sum of them! Were I to count them,
they would outnumber the grains of sand—
when I awake, I am still with you."*

What's Happening

**Saturday 11th
November 10
to 12 noon**

Coffee morning with games and craft activities

**Saturday 18th
November
6pm**

Film Evening – 'Hacksaw ridge" Based on a true story about an Army Medic serving during the Battle of Okinawa, who refuses to kill people and becomes the first man in American history to receive the Medal of Honour without firing a shot.

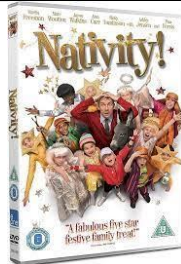
**Saturday 25th
November
from 2pm**

Christmas Fair – in and around the church. Gifts, china, bric-a-brac, cakes, Bottle Tombola and more, including refreshments.

**Saturday 9th
December**

Coffee morning with games and craft activities

**Saturday 16th
December at
3pm**



A matinee performance of 'Nativity!'. Filmed in Coventry. Bring all the family for this festive take on the most important reason for Christmas



Hire our Octagon!



Are you looking for a venue? The Octagon is a modern room built adjacent to the church. It can be hired at very competitive rates for small groups, meetings or parties. Please contact the church office on 01926 470449 for details.

Rheams (Plumbing and Heating) Limited

Tel. 01926 428752

Family run business established in 1967

- GAS SAFE REGISTERED ENGINEERS
- 24 HOUR CALL OUT SERVICE, 7 DAYS A WEEK
- FREE INFORMATIVE CONSULTATIONS
- LARGE/SMALL SCALE RENOVATIONS
- NEW BUILDS
- BOILER REPLACEMENTS/REPAIRS
(natural gas, LPG and Commercial)
- LANDLORDS CHECKS
- POWERFLUSH SERVICE
- BATHROOM INSTALLATIONS
- ALL GENERAL PLUMBING

The Parish Giving Scheme

Regular giving helps us to plan and sustains our ministry. If you would like to give regularly, we have recently joined the Parish Giving Scheme (PGS), a simple system of setting up a regular donation to St Mary Magdalene's.

There is information about the Parish Giving Scheme and how it works, including a short film clip on the Parish Giving Scheme website at www.parishgiving.org.uk/donors.



There are three ways your donation can be set up through the Parish Giving Scheme:

Online at www.parishgiving.org.uk/donors/setting-up-your-gift

By phone on 0333 002 1271 (Monday to Friday 9.00am - 5.00pm) and quoting our Parish Code 110611247

By post, by asking our Finance Administrator Kerrie, for a copy of the PGS booklet which has the form in it.

Thank you

Sally Druce



LILLINGTON
COMMUNITY
PANTRY

Volunteer Role - Supermarket Collections

We are looking for a team of volunteers who would be willing to collect surplus food from local supermarkets in Leamington and Warwick to support the work of Lillington Community Pantry.

Items such as surplus bread and fruit and vegetables would need to be collected and dropped to the Pantry (Pound Lane, Lillington) ready for opening the pantry at 11.

Collection Hours:

Wednesday: 8am - 9:30am

Thursday: 8am - 9:30am

Friday: 8am - 9:30am

We currently collect at:

Sainsburys, Shires Retail Park, Leamington

Sainsburys, Cubbington Rd, Leamington

However we are in the process of expanding our relationship with other supermarkets.

Requirements:

- Clean driving licence
- Able to manage physical labour - items can vary in weight.
- Able to build relationships with the supermarket staff and engage in a way which demonstrates the culture of the pantry.

Thank you for supporting the vital work of the Lillington Community Pantry



Bishop of Coventry's Farewell Service

Following the Bishop of Coventry's appointment as the next Dean of Windsor, the Dean of Coventry has invited representatives of the Parishes to his Farewell Service at Coventry Cathedral on Saturday 4th November at 2.00pm, after which refreshments will be served by the Mothers' Union.

The Dean says it would mean a great deal to Bishop Christopher if representatives from our parishes were able to attend, so the invitation is extended to all who would like to be there.

To help with the practical arrangements on the day, please let Churchwarden Graham Cooper (tel. 01926 426942; e-mail grahamx.cooper@tiscali.co.uk) know if you would like to attend.

With thanks again and good wishes,

Graham E. Cooper



Choir Concert with Special Guest Artists

Sunday 26th November – 7.00pm in church

In November the Choir of St Mary Magdalene's will play a central role in our Advent celebrations.

A concert will take place in church, on Sunday 26th at 7pm, to raise money for the current campaign for new chairs.

There will be choral works, organ music, songs and readings -

all around the theme of Advent and culminating in part 1 of Handel's Messiah.



Edward Button, counter tenor in The King's Singers, will be lending his voice as star soloist for the evening. He will be performing the beautiful aria Eternal Source of Light Divine - from Ode for the Birthday of Queen Anne by Handel. This will be accompanied on the organ by Mike King and Chris Gibson on trumpet. Edward will also be singing two solo arias from the Messiah, and will be joined by other local soloists, Penny Turnbull (Mezzo-Soprano), Rob Forbes (Tenor), David Borsada (Bass), and our very own Cordelia Gadsby (Soprano). Colin Druce will accompany on the Organ.

For our performance of Messiah part 1, the Choir of St Mary Magdalene's will be augmented by members of our congregations and also by singers from other surrounding choirs, both church and secular. Stemming from last year's performance of Vivaldi's Gloria, this is fast becoming a favourite tradition of bringing hearts and voices together from our wider community to sing in our wonderful church.

Rachael Jefferies

Charity of the month

Netherfield Day Centre

Netherfield Day Centre has been an established mental health provider for over 30 years in Leamington Spa. They provide social support and rehabilitation for people who suffer or are suffering from mental or emotional stress, in a relaxed and therapeutic environment.

They support members relatives and provide a link between the community and statutory services. The philosophy of care is to encourage members to develop their personal skills and to regain confidence up to the limit of their potential.



Gaynor Cook & Sara Snatt

Join Us Online!

Did you know you can attend our church services online?

If you are unable to join us in-person due to illness, caring or travel, you can still join our weekly services. You can join us live if you are at home, or catch up later if you're otherwise engaged.

You can participate from anywhere in the world and from any time zone. We have regular virtual congregation members from Australia and Germany among others!

We stream our Sunday morning service live at 9.30am and our Wednesday morning service live at 10am. There are booklets on our website so you can follow the service.



You can join us via our website:
www.lillingtonparishchurch.org/streaming
or follow us on Twitch:
www.twitch.tv/lillington_parish_church



Do give it a go - you may be at home but you will feel like you are with us in person and we welcome your participation.

Diana Taulbut





Join us at Star Church!

THIS IS WHAT OUR 11.15 SERVICE LOOKS LIKE
Join us for Star Church Worship every Sunday



**FUN * LIVE BAND * REFRESHMENTS *
ACTIVE * FAMILIES * EVERYONE WELCOME**



Parent and Toddler Group
Thursdays 10.30am – 12.00noon
in term-time

Octotots is an informal weekly
get-together for babies, toddlers and
their grown-ups held at
St Mary Magdalene's church
Vicarage Road, Lillington CV32 7RH

The sessions are FREE! and
Refreshments are served throughout

Pick up a flier where the dates of our
meetings are listed or contact the church
office to find out more

01926 470449 – email

lillingtonparishchurch@gmail.com or

check out our website :

www.lillingtonparishchurch.org

Walkers Group



On a beautiful sunny day, more like summer than Autumn, eight members of the Walking group set off from Church for a walk around Walton.

We parked in the village & walked to Walton Hall where we visited the small but lovely Church which was being decorated for Harvest. You can see it in the background of our photograph above. The walk was on a quiet road for about 1.5 miles where we had our "Apple stop".

We then walked along the side of the "main road" for a very short distance before turning into farm land. We think we walked just under 4 miles back to our cars & driving into Wellesbourne for lunch in a coffee shop.

Thelma Dawkes

Dear Friends,

I hope you are enjoying this month's issue of Crosstalk. We aim to provide interesting and informative articles for you to enjoy, and to this end invite you to contribute towards your Parish magazine.

Have you got a story to tell? We'd love to know your faith story – how did you come to God? Or perhaps you'd like to tell us about an amusing situation which happened to you, or about a cause which is dear to your heart.

Please send articles to me, Alex at:

crosstalkeditor@gmail.com

by Weds 18th October (November issue)
or Weds 15th November (December issue)

If you have any questions or have an idea for an article but are unsure what to write, please speak to Sara Snatt sazzysnatt7@icloud.com or Gaynor Cook gaynormail@btinternet.com.

Thanks and I look forward to hearing from you!

Alex Robinson



Help to keep our magazine going!

If you have enjoyed reading this issue of Crosstalk and you are able to, please consider donating a small amount to help with our running costs.

Donate cash

In church - look out for the donation box and mark your cash with 'Crosstalk'

Donate via bank transfer or cheque

Our church bank details are:

Bank: HSBC

Account Name: Lillington PCC

Sort Code: 40 27 06

Account Number: 91308580

Reference: CROSSTALK



Thank you for all you are able to give.



**Lillington Parish
Church**





ECO TIP!

Be inspired by St Francis (celebrated this month) who saw that every creature, atom and plant bears the makers mark.

“He delighted in all the works of God’s hands and from the vision of joy on earth his mind soared aloft to the life-giving source and cause of it all. In everything beautiful he saw



Him who is beauty itself and he followed his Beloved everywhere by his likeness imprinted on creation” (Thomas of Celano).

Does seeing the world through the eyes of St Francis alter your own relationship with the abundant harvest that it provides us with?

Steve Hucklesby

Phil Edwards
Handyman Services

General Handy Man
NO JOB TOO SMALL!

Whatever you need doing, a dripping tap, some shelves putting up, gutters cleaning, or the garage clearing out, give me a call.



Home: 01926 424485
Mobile: 07931 812235
e-mail:
philedwardsramg@gmail.com

Services in November

November 5	4 th before Advent	9.30am 11.15am 6.00pm	Holy Communion (in church & on line) All Age Communion (in church) Evening Service (in church)
November 12	REMEMBRANCE	10.00am	Joint Holy Communion (in church & on line)
November 19	VISION SUNDAY	9.30am 11.15am	Holy Communion (in church & on line) Worship for All (in church)
November 26	Christ the King	9.30am 11.15am	Holy Communion (in church & on line) Worship for All (in church)

Weekday Services in November

Wednesdays Holy Communion **in church** and online at 10.00am on 1, 8, 15, 22 & 29 November

From the church records (September)

BAPTISMS: Jack Matthew Dean

Daisy Florence Dean

WEDDINGS: None

FUNERALS: None



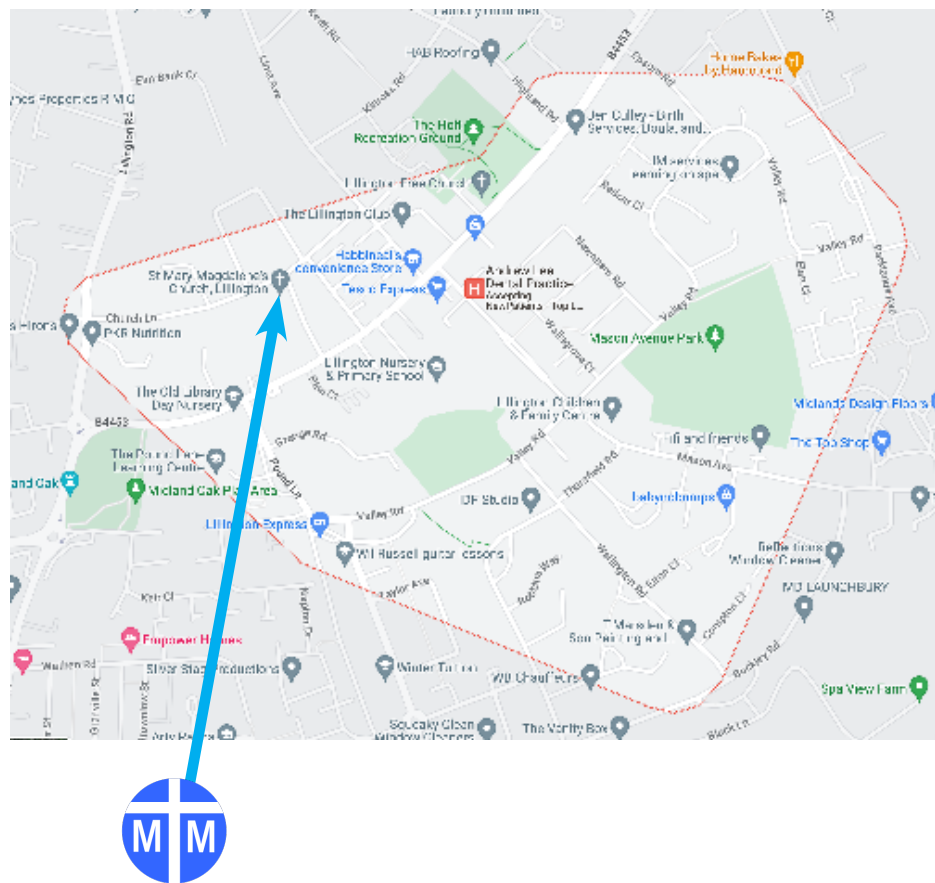
Services are streamed live
and are also available afterwards on the website
www.lillingtonparishchurch.org

For Funeral, Baptism and Wedding enquiries,
please contact Rev. William Smith on 01926 316475
or email wms.smith@btinternet.com

For general enquiries please contact the church
office by telephone on 01926 470449 or email
office@lillingtonparishchurch.org. Outside of office
hours, please leave a message on the answer phone
and we will return your call.



FIND US



We are on the corner of Church Lane and
Vicarage Road in Lillington!

For directions, use Google Maps or email
office@lillingtonparishchurch.org

CONTACT US

Please do contact us with any questions or queries, or just to say hello!



Church Office & General Enquiries
Wendy Driscoll
office@lillingtonparishchurch.org
01926 470449

*The Church Office is normally open 9:30am to 1pm,
Monday, Tuesday and Thursday*

Vicar
Rev William Smith
01926 316475

Churchwardens

Sally Druce
sally.druce1@gmail.com
07933 295350

Graham Cooper
grahamx.cooper@tiscali.co.uk
01926 426942

Love Lillington
Christine Butler
j.butler1christine@gmail.com
07963 229756



Follow us on Facebook!
facebook.com/LillingtonParishChurch



Parish website:
www.lillingtonparishchurch.org

