

CROSS  
TALK

st mary  
magdalene's  
PARISH MAGAZINE



*April 2025*

Do not be afraid, for I know that you are looking for Jesus, who was crucified... He is not here; He has risen! just as he said...

# From the Curate



**This year a small band of pilgrims** journeyed to Holy Island (Lindisfarne) for the annual parish retreat. This year's retreat took place slightly later than usual after the February half term holiday. This meant that we were able to enjoy more of the island amenities such as the coffee shop and the ice cream parlour! The ginger and lemon ice cream was very yummy! The retreat started with prayers at church by the lych gate before getting in our cars and starting our 5 and half hour journey.

**We reached Holy Island** to lovely sunshine in the afternoon and made our way to our home for the week. As we were a small band of pilgrims, we were able to all stay in one cottage. This meant that we were able to share meals together - each of us taking it in turn to cook for the group. We had some wonderful food together, sharing stories, recipes and knitting tips! We even managed to complete a very difficult jigsaw puzzle!

**During the week**, we journeyed with each other in prayer by attending the Northumbrian Community Morning Prayer at the St Cuthbert Centre (URC Chapel) and evening prayer at St Mary's. For the week, I created a prayer book that had a focus for each day with prayers for the day and night prayer (for this, we met together every evening). We spent time thinking and praying for peace, our community, our mission and for creation. We also went on a prayer walk around the island and experienced a wonderful dawn Eucharist service in the watch tower overlooking the harbour.

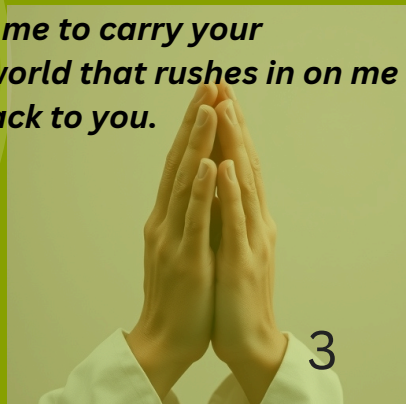
**The weather** for the week started with gale force winds but remained mainly dry with beautiful sunshine in our final days; it was very cold outside but lovely and warm in our cottage. The dry weather allowed us all to take the opportunity to go out and spend time with God in creation. From our reflections of the week, we all experienced His presence in some way - whether it was watching the geese fly overhead, greeting the sunrise, or watching the stars from a bedroom window. We all came back from the retreat restored and with a deeper connection to God.

### ***Prayer of St Aidan***

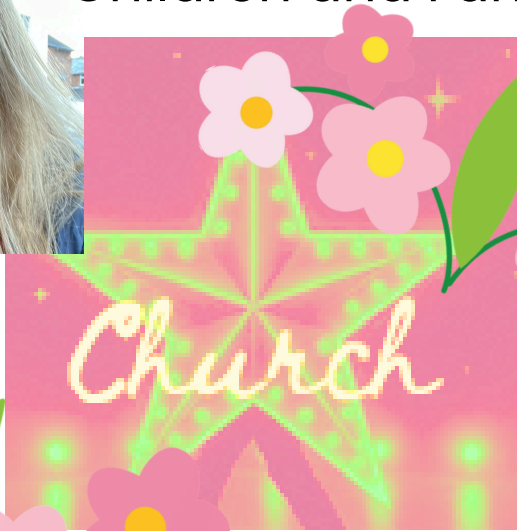
***Leave me alone with God as much as may be. As the tide draws the waters close in upon the shore. Make me an island, set apart, alone with you, God, holy to you.***

***Then with the turning of the tide prepare me to carry your presence to the busy world beyond, the world that rushes in on me till the waters come again and fold me back to you.***

*Amen.*



# Children and Families



**This month** in my role as Children and Family Project Worker, I thought I would share some more Aims and Objectives of the project. In supporting the preaching and spiritual life at St Mary Mag's, I aim to offer a clear set of themes for the 11.15 Star Church service, making worship accessible and meaningful to all of our worshippers, whatever their age. These themes are then reflected across Octotots and during Sunday Club sessions (these happen once a month and are an opportunity for our younger worshippers to meet together in the Octagon), ensuring a holistic and consistent approach.

**So far**, we have explored our identity as children of God through a series based on the theme 'People of...', encompassing: Purpose - Peace - Power - Participation - Prayer - Passion - Potential - Praise. Future themes include 'Christian Living' and 'A Life of Prayer', in which we'll be thinking about: 'How and why do we pray?'; 'What happens when our prayers are not answered?'



**Our Star Church** congregation enjoy interesting services with much interaction, depth of thinking and a real chance to explore a range of themes. We're aiming to uniquely shape this 11.15 service in order to reflect people's lives, interests and experiences. Our lay leaders and speakers have spoken positively about their experiences in preparing talks and delivering ideas from this approach - it is really gratifying to hear that lots of people are finding it helpful and engaging!

**I'm looking forward** to building on this early start and drawing together more opportunities for thoughtful worship. If you haven't ventured into St Mary Mag's yet or for a while, now is the time. Come and join our 11.15 Star Church for vibrant services suitable for all ages. I would be delighted to discuss or answer any questions you may have about the project and can be contacted on [cfprojectworker@gmail.com](mailto:cfprojectworker@gmail.com)

**Thanks** for taking the time to read this article and I hope it is insightful as to the work of the project. If you'd like to follow the sermon series, I have produced blue term cards, which outline the themes and weekly content. These can be found at the back of church.

Hester Meacock



Coffee Morning success!



**Thank you!**

We know it wasn't all about the money as the Love Lillington coffee morning last Saturday was such a lovely event in so many ways - but here are the figures - with special thanks to Robin Innes and Godfrey Carr for counting the beans today!!

I would like to give thanks to a member of our congregation who made a cake regardless of the fact that her husband had undergone major surgery the Thursday before! Thanks also to Sara Snatt for the publicity material, to the Friday evening team - Pat Poulson, Maureen Reynolds, Carol Innes and Trisha Smith who all turned out to help me prep the room and the table sale and to Mary Garrard-Lole who journeyed over on Saturday from Coventry on two buses with a shopping trolley of contributions for the event, and was stood at the sink in the kitchen washing up for much of the time.

This is the sort of thing that makes our Love Lillington Initiative something so special that I will always keep it close to my heart.

Approximate total made for Love Lillington Grants (it has to be approximate as Gift Aid has been approximately calculated)

**£825.00**

Thank you everyone and Thank You Lord!

**Christine Butler**

**Love Lillington Action Administrator**

# LOVE

## **Love Lillington Prayer**

lovelillingtonprayers@lillingtonparishchurch.org

Delia Button

## **Love Lillington Grants**

lovelillingtongrants@lillingtonparishchurch.org

Christine Butler

## **Love Lillington Action**

lovelillingtonaction@lillingtonparishchurch.org



He lives.

Cross of death  
Precious blood  
Holy, pure and true  
Sinless blood  
Pouring down  
Given; just for you.  
Do you see  
Jesus there  
Dying in your place?  
All for Love  
Feel His pain  
Look and see  
His face

All for love  
All of grace  
For our sinful  
Human race!

Deeper joy  
Waits for you  
Heaven's hope  
Revealed...  
Kneel before  
The risen Lord  
Confessing sin  
At mercy's door  
His love is true  
He calls  
Your name  
**He Lives**  
To set **you** free...



© Jane  
Rummey,  
2025 *At Easter*

Poem





## Ukraine UPDATE

**On Wednesday 19th February**, St Mary Mag's held a coffee morning to raise funds for supplies for Ukraine. In total £1,074.21 was raised. Stephen Willson from the Polish Mission gave a presentation, showing the journey made by himself and others as they took ambulances filled with vital supplies to Lejacz near the Ukraine border.

**On Monday 24th February**, several members of the congregation joined a candlelit vigil which was held around the Bandstand. This was to mark the third anniversary of the invasion. Friend of St Mary Mag's David Kozlowski, who leads efforts in this area to co-ordinate aid said, 'At a time when Ukraine continues to fight for its freedom, our solidarity has never been more important. By standing together, we show that the Ukrainian people are not alone in their struggle.'



Join us for our  
annual

*Bluebell Walk at Ryton Pools*

**SAT 3RD MAY 10.30 MEET AT  
RYTON POOLS (CAFE CAR PARK)**



JUST TURN UP. FOR MORE INFO CALL PAT POULSON 07919 518174



# What's Happening

- **Saturday 12th April 10-12 Coffee Morning**
- **Saturday 3rd May 10.30 Bluebell Walk at Ryton Pools  
(Meet at Ryton Pools Car Park)**
- **Saturday 10th May 10-12 Coffee Morning  
(In aid of African Vision Malawi - Textbooks for Kids Appeal)**







## MEMORIES OF DIVINE LUNCH BREAKS ...

**Back in the 1980s** I worked in Southwark in London my workplace being close to various well known tourist attractions including Tower Bridge, the Tower of London and HMS Belfast. As my office was very busy and the job quite demanding, I often felt in need of a complete change of scenery during my lunch hour and a bit of peace and quiet. Southwark Cathedral, a short walk away, fitted the bill perfectly. Southwark Cathedral is reportedly London's oldest Gothic structure, and has a diocese that is populous and diverse.

**My memories** of the cathedral still linger and include the gargoyles that served as water spouts on the outside walls, the Shakespeare memorial, the Chaucer window, the stone nave and the various stained glass depictions of Christ. However, it is the atmosphere of the cathedral that is my abiding memory; that of a place of peace and spirituality where visitors could sit in silent contemplation, pray if they wished to, and in the case of nearby office workers like myself, return to their desks in a calmer frame of mind.

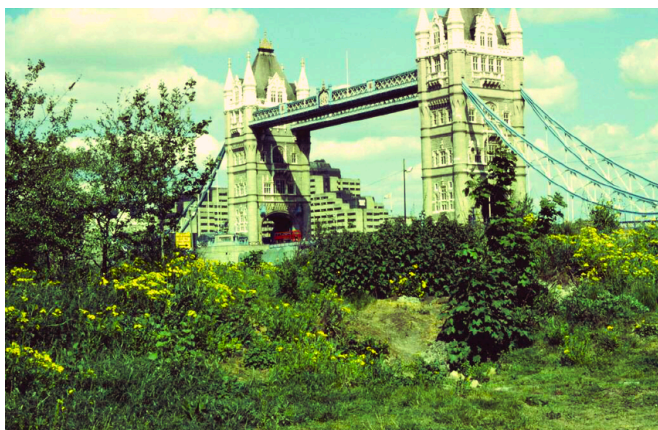


**The hours I spent** at Southwark Cathedral instilled in me an enduring fondness for cathedrals and I am always pleased if when staying in a city with my husband there is one nearby.

The natural world can also serve as a restful lunch hour retreat. Such an example was the William Curtis Ecological Park named after an 18th century botanist and next to Tower Bridge. It had been created on the site of a former lorry park in 1976 and contained several large natural ponds along with reeds, trees and bushes. It was more like a nature reserve than a park, being a paradisiacal haven for birds insects and amphibians. I tended to spend lunch hours there in the warmer months and it was a wonderful place in which to relax and appreciate the beauty of biodiversity. Parties of local school children would often visit.

### **The William Curtis Ecological Park**

was bulldozed in 1986 the site having been returned to its original owners but not before a metic-



ulous evacuation of the park's wildlife to a site elsewhere in Southwark had been complete.

The penultimate scene in the 1984 TV film of Agatha Christie's "Nemesis" starring Joan Hickson was filmed in the park. A key character stands there looking contemplatively across at the Thames and Tower Bridge. "Nemesis" is often re-shown on the Drama television channel and every time I watch it I feel fortunate to have spent time in such an out of the ordinary green space as the William Curtis Ecological Park.

**Amanda Stevens**

**LOVE** *ONE ANOTHER*



*as I have loved you*

*This is the message you have heard  
from the beginning:  
We should LOVE one another...*

[keep it simple]



## Mothering Sunday and Easter..

during my childhood were very special times and there are many happy memories of simple pleasures that meant so much.

**As many children do nowadays,** we used to make our own cards but, in later years, I used to search for a card entitled ‘Mothering Sunday’, not ‘Mother’s Day’. My mother disapproved of the latter and preferred the historical title, as do I! Life was simpler in those days – such a long time ago! My two brothers and I would collect wildflowers from the nearby countryside (you were allowed to pick them then) and make small posies. We looked forward to buying Kit Kats at the sweet shop, ‘Mint House’, eating them and using the foil wrappers to wrap around the flowers – no rolls of kitchen foil then. The posies were presented to tearful mothers in church on Mothering Sunday, followed by tea and cakes at home with Dad in the afternoon. Simple pleasures.

**You couldn’t buy** hot cross buns before Good Friday and we looked forward to joining the queue at the bakery early in the morning. There were no flavour choices - just good old-fashioned, freshly baked hot cross buns. Easter eggs were never seen in our house before Easter Day. Mum managed to hide them and produce them on return from church. Excitement mounted, wondering which of the eggs seen in the local shops we would be given – Cadbury’s, Terry’s or Rowntree’s, and what would be inside? I wish you all a Happy Easter.

# Thankyous...

St Mary Mags is a talented place: witness **Jack and Jacob's** astonishingly polished brand-new podcast **Beyond the Pew**



(catch it on **Spotify!**  
search **Beyond the Pew**)  
also on our St M&M  
webpage.

**Also** the multi talented  
(but **ORGANISED!**)  
**Sara Snatt**  
(shown here with trusty  
clipboard and concealed  
Venn diagrams!)

**Many thanks** for your  
all your hard work!





# JOIN US FOR A COFFEE MORNING

SATURDAY 12TH APRIL

10 - 12

ST MARY MAGDALENE'S  
VICARAGE ROAD CV32 7RH



## Great cakes



NO JOB TOO SMALL!

**PHIL EDWARDS**  
**HANDYMAN**  
**SERVICES**

Whatever you need: fixing a  
dripping tap; shelves put up;  
gutters cleaning  
[philedwardsramg@gmail.com](mailto:philedwardsramg@gmail.com)

Give me a call!

01926 424485

07931 812235

ADVERTISEMENT

17

## My new garden

*Time for Change*



I was living in South Leamington in a lovely house with a small south facing garden, which I absolutely loved and where I spent a lot of my time. So, when my daughter suggested that I move, my first reaction was: why would I want to move when I had everything I wanted where I was? She gently pointed out that if there ever came a time when I couldn't drive, then I would become rather isolated as most of my friends, family and my church were on the north side of town. Also, I don't think she was particularly happy when she found out that I frequently climbed to the top of a ladder to prune a climbing rose!

So, rather reluctantly I agreed to start looking for a new home. It quickly became apparent that properties on the north side of the town were more expensive and that it would be a flat rather than a house. So, probably - no garden. Eventually, we found a very nice first floor apartment with a wonderful view overlooking playing fields; just 15 minutes' walk from church and from my family, but of course no garden. What it did have however was a very large balcony running the full length of the apartment. Now, 18 months later, the balcony is full of pots and plants ranging from spring bulbs, hellebores and shrubs such as a daphne (giving off a wonderful perfume as I open the door), as well as a stunning echinacea and a beautiful Amelanchier. Yes, a tree on my balcony! And there is still room for a small table and two chairs, where I sit watching the most amazing sunsets which quite literally take my breath away.



The other bonus is that I have more time to potter in the churchyard, putting in bulbs or plants that friends have kindly given to me. I also like to look after the pots outside the Octagon with Sara Snatt. I am very happy with my new garden and really appreciate being so close to church and my friends – this has proved to be a real blessing. Change can be difficult - it's a bit like stepping into the unknown. But if we embrace it, we find that it can open new doors and bring something fresh and even more exciting into our lives.

**Gaynor Cook**





## ECO CAKE OFF?



If like me you are a fan of Bake off, you may remember Nancy Birtwhistle who won the 2014 series. She is now a published author and her passion is caring for the environment and saving money - well she does come from Yorkshire!

One of her great 'home made products is called 'Pure Magic'. This product is not harmful to animals or fishes, it kills germs (which bleach doesn't), whitens and brightens and it destroys limescale. It is a predominantly a toilet cleaner but can be used to remove limescale from other areas (eg shower doors).

You will need:

200g Citric Acid - try The Range, Robert Dyas or online for larger quantities)

150ml just-boiled water

20ml eco-friendly washing-up liquid – I use Bio-D which is available on-line and also get it for the Octagon

10 Drops of organic tea tree oil (or other fragrant oil) - I don't bother but it does make it smell nice!





(A.I interpretation of a sink near you)

Place the Citric Acid crystals in a heatproof measuring jug and pour over just-boiled water. Stir until the liquid is clear and the crystals have dissolved, and then simply add the eco-friendly washing up liquid and tea tree oil and mix well using a small whisk.

- Leave it to cool in the jug completely (uncovered) for a few hours to prevent crystallisation, then pour into a spray bottle and it is ready to use.

- Use it as you would any other toilet cleaner - spray on leave for at least 10 minutes (or overnight), scrub clean and flush. Rinse the nozzle to stop it going sticky. If you use it for any other purpose make sure to rinse surfaces well.

I have been given permission to use this recipe in Crosstalk, but if you are interested in more recipes she has produced lots of books on green living, baking and gardening.

### **Carol Innes**

Source: © Nancy Birtwhistle ; Recipe taken from 'Green Living made easy' ;

Instagram @nancybirtwhistle ; website

<https://www.nancybirtwhistle.co.uk/>



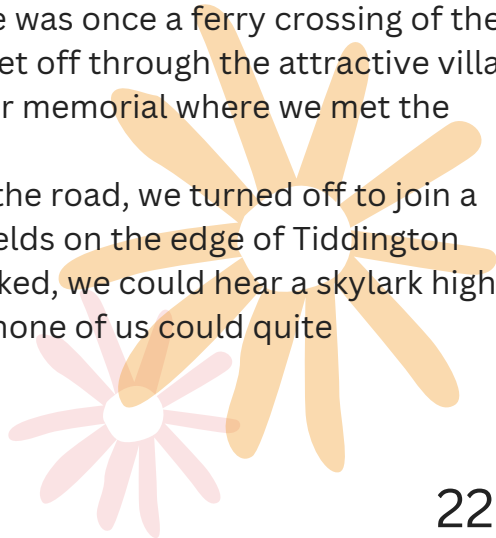
# Walkers' Group


## MARCH REPORT

March's walk was the first of our Tuesday walks and we were delighted that we were blessed with beautifully sunny and relatively warm weather after a prolonged period of grey skies and rain.

Having gathered at The Ferry pub in Alveston (the name commemorates the fact that there was once a ferry crossing of the Avon very nearby), eight walkers set off through the attractive village of Alveston towards the village war memorial where we met the Stratford-Wellesbourne

road. After a short stretch along the road, we turned off to join a footpath passing between open fields on the edge of Tiddington leading to Pimlico Lane. As we walked, we could hear a skylark high above us – a sign of spring? – but none of us could quite see it.





On reaching Pimlico Lane we turned left and very soon reached another footpath which took us up a short incline to another path along a ridge with good views across to Stratford and the Welcombe Obelisk. Fortunately, all the paths were well-worn and quite dry despite the recent very wet weather. After a short break for refreshments we continued past Alvestone Farmhouse, greeted by two very noisy and enthusiastic dogs (thankfully secured behind a wire fence!) and joined the farm track taking us back towards the Stratford-Wellesbourne road. This was lined by daffodils which were still in bud when we had pre-walked the route the previous week; most of which were now in full flower after a few days of sunshine and certainly brightened the final part of the walk.

Having crossed the road again we re-entered Alveston village and made our way back to the pub for a welcome drink and lunch.

We weren't sure if spring had properly sprung (as I write this it has turned unseasonably cold again!) but the walk made us feel that it was certainly on its way!

New members would be very welcome if you would like to join us – contact Bob Cooke on 01926 315890 for information on future walks.

**Caroline Carr**

## Walkers' Programme for 2025

Date:	Led by:
Tue 8th April	Stan & Helen Ireland
Sat 10th May	Thelma Dawkes
Tue 10th June	Bob Cooke
Sat 5th July	Stan & Helen Ireland
Wed 6th August (6pm)	Godfrey & Caroline Carr
Tue 9th September	Ted & Sandra Dear
Sat 4th October	Bob Cooke
Tue 4th November	Ted & Sandra Dear

(This walk will be preceded by the AGM at 9.00 am)

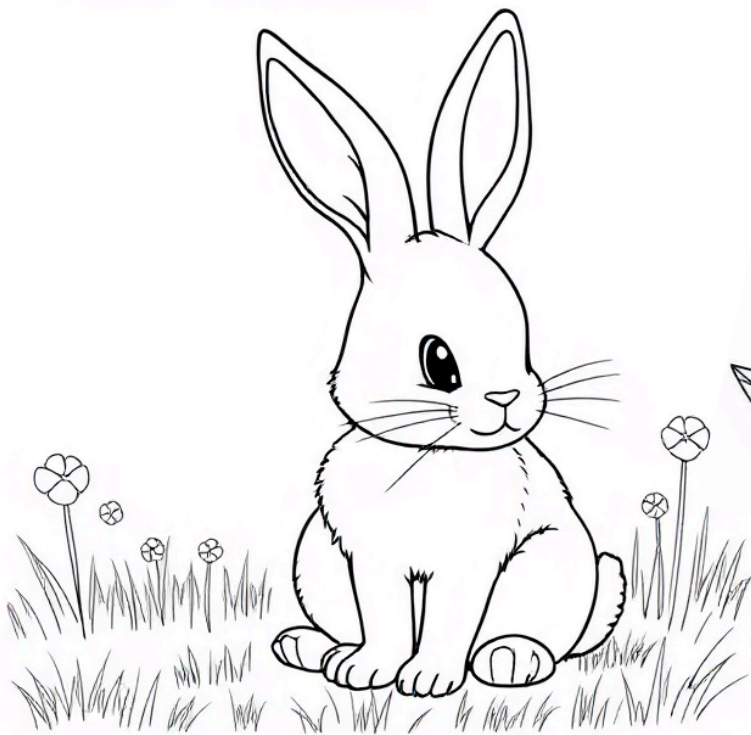
### **There will be no walk in December or January**

All walks start from St Mary Magdalene's Church at 9.30 am unless otherwise stated.





Colour me in!



# Wise Words?

Whimsy inspired by 'Wordy Wise' from the Daily Mail Letters page.

People in certain walks of life don't die...

**Gardeners go to seed;  
chefs go off the boil and  
authors come to a full stop.  
Bus drivers run out of gas;  
train drivers reach the end of the line  
and sound engineers  
simply fade away...**

Roger Bannister



## Hire our Octagon!



Are you looking for a venue?  
The Octagon is a modern  
room built adjacent to the  
church. It can be hired at very  
competitive rates for small  
groups, meetings or parties.  
Please contact the church  
office on 01926 470449 for  
details.



OAKLEY  
GRANGE  
CINNAMON LUXURY CARE

**NOW  
OPEN**  
BOOK A TOUR  
TODAY



## A NEW LUXURY CARE HOME NOW OPEN

Oakley Grange has superior facilities for our residents to enjoy along with the very best care and support. As a brand new, purpose-built care home, it provides the very latest design innovations in a luxurious yet homely setting.

Become a Founder Member and benefit from fixed prices until March 2026\*  
Warwick is opening in July 2024 and we are proud to introduce our Founder Members' Offer, giving families and residents a fixed price for 20 months from the date of opening.

Founder Members' Offer terms and conditions\* apply and are available upon request.

**For more information or to book a tour of our stunning new care home call our friendly team today: 01926 953 507**



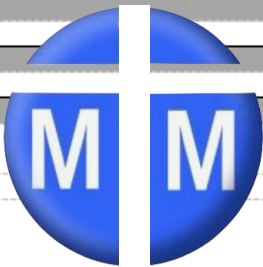
**At Oakley Grange, people will always come first**

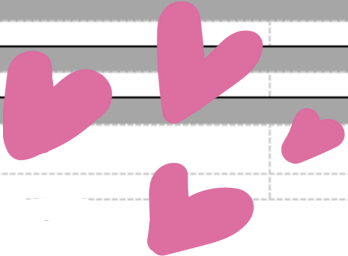
RESIDENTIAL CARE | DEMENTIA CARE | RESPITE CARE

Luxury Care Home in Warwick

Oakley Grange Care Home, Cox Gardens, Warwick CV34 7AT

[www.cinnamoncc.com/oakleygrange](http://www.cinnamoncc.com/oakleygrange) Our What3Words location: **Ranked.Moved.Bath**

<b>BAPTISMS</b>		
NONE		
<b>WEDDINGS</b>		
NONE		
<b>FUNERALS</b>		
NONE		



6 April	Lent 5	9.30am 11.15am 6.00pm	Holy Communion (in church & on line) All Age Communion (in church) Choral Evensong (in church)
13 April	Palm Sunday	9.30am 11.15am	Holy Communion (in church & on line) Worship for All (in church)
20 April	Easter Day	5.45am 10.30am	Dawn Service (in church) Joint Holy Communion (in church & on line)
27 April	Easter 2	9.30am 11.15am	Holy Communion (in church & on line) Sunday Club (in church)

## SERVICE DETAILS SUNDAY WORSHIP – April 2025

*Services are streamed live  
but are also available afterwards on the website*

**For Funeral, Baptism and Wedding enquiries**, please contact Revd. Cerys Smith on 07813782512 or email [curate@lillingtonparishchurch.org](mailto:curate@lillingtonparishchurch.org)

**For general enquiries** please contact the church office by telephone on 01926 470449 or email [office@lillingtonparishchurch.org](mailto:office@lillingtonparishchurch.org). Outside of office hours, please leave a message on the answer phone and we will return your call.

### Weekday Services in April

- Monday 14th, Tuesday 15th and Wednesday 16th April –  
Compline Service at 6.00pm
- Maundy Thursday 17th April –  
Holy Communion with Vigil 7.00pm
- Good Friday 18th April:  
Family Service at 10.00am
- Liturgy of the Cross at 2.00pm
- Stations of the Cross 6.00pm

Weds Holy Communion in church and online at 10.00am on  
2, 9, 16, 23 & 30 April





**St Mary Magdalene,  
Lillington Parish Magazine**

Advertising Rates 2024

Annual (11 issues):

¼ page £120

½ page £150

Full page £180

Single month:

¼ page £20

½ page £30

Full page £40

To find out more, please  
contact Mark at

[crosstalk@lillingtonparishchurch.org](mailto:crosstalk@lillingtonparishchurch.org)



## MOWST GARDEN SERVICES

For general garden maintenance in the Leamington & Warwick area,  
contact Mowst Garden Services.

Mowing, strimming, hedge cutting, weeding, leaf clearance,  
garden tidy ups etc

Radford Semele based, please get in touch for quotes,  
bookings or to discuss any garden issues you may have:

Mobile 07835 995161- Email [pgaff99@gmail.com](mailto:pgaff99@gmail.com)

Competitive rates, reliable and quality service.



**CONTACT US!**

**CURATE:** Cerys Smith 07813782512

[curate@lillingtonparishchurch.org](mailto:curate@lillingtonparishchurch.org)

**GENERAL enquiries & office:**

Wendy Driscoll 01926 470449

[office@lillingtonparishchurch.org](mailto:office@lillingtonparishchurch.org)

**WARDENS:**

Sally Druce 07933295350

[sally@lillingtonparishchurch.org](mailto:sally@lillingtonparishchurch.org)

Sarah Boad

[sarah@lillingtonparishchurch.org](mailto:sarah@lillingtonparishchurch.org)

**DIRECTOR OF MUSIC:**

[music@lillingtonparishchurch.org](mailto:music@lillingtonparishchurch.org)

**LOVE LILLINGTON**

Christine Butler 07963229756

[lovelillingtonaction@lillingtonparishchurch.org](mailto:lovelillingtonaction@lillingtonparishchurch.org)

**[facebook.com/LillingtonParishChurch](https://www.facebook.com/LillingtonParishChurch)**



# Church Services

## Sunday

**9.30am** Holy Communion Service

(1 hour service with robed choir)

**11.15am** All Age Service

(40 minute service with children at its heart)

## Wednesday

**10.00am** Holy Communion Service

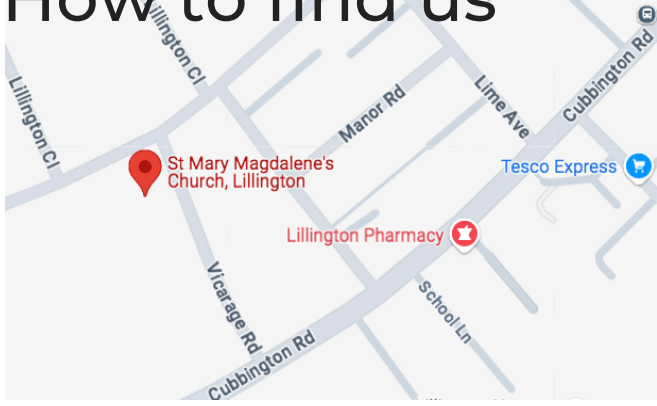
**OR** you can now join us via our website:

[www.lillingtonparishchurch.org/streaming](http://www.lillingtonparishchurch.org/streaming)

or follow us on Twitch:

[www.twitch.tv/lillington\\_parish\\_church](http://www.twitch.tv/lillington_parish_church)

# How to find us



Vicarage Rd, Lillington  
Leamington Spa CV32 7RH  
01926 470449

