

FREE! Please take a copy

C
R
O
S
S

A
L
K



Lillington Parish Church
St Mary Magdalene's
Magazine

SEPT 2024

From the Vicar

Dear Friends,

What would you spend £7.69 on? It certainly doesn't go very far these days, yet this is the monthly income of many people living in the slums of Bangalore in Southern India. There are some desperately poor people in the world. It can be hard to comprehend just how difficult it is for them having to subsist on such a frugal income and picking through other people's refuse to provide the building materials for their one room homes.



The United Kingdom has one of the wealthiest economies on the planet. We define poverty in this country merely in terms of a percentage of average income, yet the poverty in the developing world is truly horrifying.

As Harvest approaches, we gather to celebrate all that the land produces. Indeed, planet earth is rich and fertile and certainly has the resources to feed everyone. It was Mahatma Ghandi, however, who made the challenging observation that while the world has enough for everyone's need it cannot sustain everyone's greed. There are a minority of countries whose consumption of natural resources is disproportionate to their size. As a result, there are people in this world who are going hungry and who have somehow

to subsist on £7.69 a month.

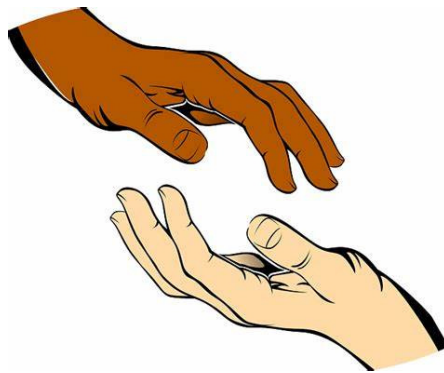
Next year I am planning a trip to India and hope to deepen links I have with various Christian ministries working amongst the poor. There are some very good things happening and I hope that together with our links with Malawi and our support of Water Aid and other charitable causes we can be part of the solution rather than the problem.

This year we are asking everyone to make a really special effort at Harvest giving thanks what we have but making offerings to help others. On Sunday 13th October at both morning services, we will be gathering offerings of cans for the foodbank in Lillington and a monetary offering (pound coins taped to the tins) to be sent directly to help with Water Aid's campaign to provide clean water for all.

Please help us to redistribute some of our wealth this Harvest.

With every blessing,

William



New Editor needed!

I am soon to have my hands full with another baby on the way, so Crosstalk needs a new Editor.

Please take the time to consider whether this is something you could take on. It only takes a few hours each month, and you may learn something new.

If you'd like to volunteer but you're not sure you have the right skills, never fear! I can teach you how to use Canva or Adobe Indesign - great skills to add to your toolkit or put on your CV.



If you're a budding editor, content creator, or marketer, or you just have a few hours to spare each month and are happy to help out and try something different, please get in touch or have a chat with me at church!

Alex Robinson

crosstalk@lillingtonparishchurch.org

The August Maintenance Crew!

During August we set out each Wednesday evening to do some general maintenance around the church. So you may have seen people up ladders or on their hands and knees around the churchyard.



Did you know that the church doesn't have a damp course? So how does it keep out the damp? The answer is that the stone walls 'breathe'; left alone they will allow moisture to permeate out. However we have two problems, on the inside the walls were painted many years ago with standard emulsion paint and so that clogs things up. On the outside we had some lovely plants but they too were stopping the moisture from getting out. So we have

cleared the borders around the church (although we left the sunflowers) and where possible replanted things around the churchyard.

William managed to clear a lot of the moss off the Octagon roof – but if you look now you will see that he couldn't reach all the way! For his own safety



we wouldn't let him climb on the roof – although he was game!

Roger did the majority of varnishing the wooden window frames of the octagon – who knew that he was trained as a Painter/Decorator!

Not forgetting all our gardeners who battled with weeds, shrubs and wheelie bins. As thank you for all the hard work a Barbecue is planned for the last Wednesday in August – and we are hoping for good weather!



Taking care of the Fabric of our church is not a one off, there are always little jobs to do not just to make it look nice, but to preserve it for the future. So if you have an hour or two to spare and would like to help we can always find something for you to do!



Carol Innes – Fabric Committee

PS – captions for any of the photos can be sent to the Editor, we would love to know what you think!!



LOVE LILLINGTON : OUR CHURCH COMMUNITY INITIATIVE


HOW TO DONATE

Most of you will have read the “Thank you Love Lillington” article in the June edition of Crosstalk that was written by Miriam Bowen from the Warwick District Foodbank. If you missed it, please do find a moment to read it.

How do we continue to offer this wonderful Christian ministry to the poor, vulnerable and needy people who live in our parish? We can continue to supply items that people need so desperately because we have a **Love Lillington Grant Fund**.

The Planning Team for Love Lillington apply for and receive various grants to augment the Grant Fund and our annual Christmas Fair and Summer events give us 10% of the profits made. One of the monthly Saturday coffee mornings is devoted to Love Lillington and this will happen in October this year – further information to follow. Congregation members are generous with their contributions to the fund, and the more we raise, the more help we can offer.

If you would like to help us keep our fund healthy so that we can continue with our work here is how you can donate. We appreciate all donations, regular and “one off”.

<p>By bank transfer to HSBC – Account Name “Lillington PCC” Sort Code: 40 27 06 – Account Number: 91308580. Please reference your payment “Love Lillington”</p>	
<p>By using the Sum Up payment machine by the church entrance. Please select “Love Lillington” on the screen as the recipient of the payment.</p>	
<p>By cash donations via the church collection plate: please mark your envelope “Love Lillington” and if you Gift Aid, please use a yellow GA envelope and mark it the same way.</p>	
<p>By cheque – made out to “Lillington PCC” and write “Love Lillington” on the back of the cheque – please mark your envelope “Love Lillington” and again use a yellow GA envelope if you gift aid.</p>	

With thanks

Love Lillington Planning Team: Mike Duff (Chair) Rev Cerys Smith, Delia Button (Grants) Christine Butler (Action) Caroline Carr (Prayer)

Could you volunteer?

Many people already volunteer in many different ways at the 9.30am service – thank you for all that you do! Many of you volunteer for several roles - we are very grateful.

Rotas can be arranged to avoid holidays and it is OK to do more than one role at the same service. Rotas come out once a month and it is possible to swap if you are not available on a particular date.

Some of our longstanding volunteers have retired or moved away so we have opportunities in many different roles that need filling – please see the list below! You will see the roles that we need to fill are very varied and occur at different frequencies.

What roles are on offer?

Welcome Team - once a month

Coffee Rota – every 6 weeks

Server – every few weeks

Chalice –once a month (training will be given)

Intercessions – once a month (training will be given)

There will be an evening event for current and potential volunteers in October (date TBA) – do come along if you would like to know more.

If you are interested, please speak to me at church, or call / email: sarah@lillingtonparishchurch.org 01926 336822 / 07850 050238

Sarah Boad



OAKLEY
GRANGE

CINNAMON LUXURY CARE

**NOW
OPEN**
BOOK A TOUR
TODAY



A NEW LUXURY CARE HOME NOW OPEN

Oakley Grange has superior facilities for our residents to enjoy along with the very best care and support. As a brand new, purpose-built care home, it provides the very latest design innovations in a luxurious yet homely setting.

Become a Founder Member and benefit from fixed prices until March 2026*
Warwick is opening in July 2024 and we are proud to introduce our Founder Members' Offer, giving families and residents a fixed price for 20 months from the date of opening.

Founder Members' Offer terms and conditions* apply and are available upon request.

For more information or to book a tour of our stunning new care home call our friendly team today: 01926 953 507



At Oakley Grange, people will always come first

RESIDENTIAL CARE | DEMENTIA CARE | RESPITE CARE

Luxury Care Home in Warwick

Oakley Grange Care Home, Cox Gardens, Warwick CV34 7AT

www.cinnamoncc.com/oakleygrange Our What3Words location: **Ranked.Moved.Bath**



GRAHAM FULFORD CHARITABLE TRUST - COFFEE MORNING UPDATE

As you may know Carol and I arranged a coffee morning in church on Wednesday 11 July to raise awareness of this charity based in Warwick. The charity arranges free PSA testing which can detect the early

signs of prostate cancer with just a simple blood test. This test is not routinely available from the NHS as it is not a definitive confirmation of prostate cancer but it is currently the only marker that is available – and remember there are often **no symptoms** in the early stages when treatment is most effective.

The charity also supports research into finding more effective testing solutions and demonstrating the importance of testing.

We are pleased to have raised over £450 with a small amount of gift aid still to come which is a fantastic amount and will undoubtedly save lives. If you know a man who is over 40 tell them to get tested it may save their life, it saved mine.

Robin & Carol Innes

Did you know?

- *Prostate cancer is the most common cancer in men in the UK*
- *Around 1000 men die each month from Prostate Cancer which means that every 45 minutes a man dies of Prostate Cancer*
- *With early diagnosis and treatment, prostate cancer is often highly curable*



LILLINGTON PARISH CHURCH

CONCERT

SATURDAY 12TH OCTOBER, 7.30PM

- JUDITH AND PETER IRVINE WITH SONGS FROM THE SHOWS
- PAUL MONKS LIGHT JAZZ WITH ALTO AND TENOR SAXOPHONES
- MICHAEL KING WITH ORGAN PIECES

FREE
ENTRY

INTERVAL WITH CHEESE AND WINE

DONATIONS TOWARDS THE ORGAN
FOR THE 21ST CENTURY SURVIVAL

How is your faith in God?

At a recent PCC away day we did a Bible study on Matthew 13, the parable of the sower. In that parable the sower scatters his seed on the path, on the stony ground, amongst the thorns and on the good soil. We discussed that God is the sower and that he scatters his seed in all places, in the hope that something will grow. However, it is in the good soil where things grow, develop and last. So it is with our faith, like the seed, it needs good soil to grow and develop, to go deeper.

At the PCC away day, we discussed what we needed and what we as a church could do to nurture our faith in Jesus, for those who already come to church but also for those who are new to faith or exploring church for the first time. All of us need to think and reflect on our faith, on our relationship with God.



Do you know the wisdom and mighty works of God but still have doubts and questions? Then maybe a Bible study, homegroup or faith course might be what you need. Are there things that make it difficult for you to spend time with God? If so what are they? How can we help and support you to cut out the distractions to build a habit in spending time with God? What thorns, hurts, can we help you through to stand in the good soil where your faith can grow?

William, the PCC and I would like to know what we can do as a church to nurture your faith, so please do come and tell us. We won't be able to do everything suggested but at least we are reflecting on where we are in our journey of faith, where we would like to go with God and how we can get there.

Revd Cerys Smith

Walker's Group

On Wednesday 7th of August the Walker's Group met at the White Hart Ufton and walked through the village to the Nature Reserve. We walked round the Reserve on a pleasant though somewhat overcast evening.



As we later sat outside the pub to reward ourselves with a drink, the wonderful view towards Bredon Hill and the Malverns was clear, until the sun finally emerged and completely dazzled us with blinding evening light! A very pleasant and not too exerting evening!

Godfrey Carr

Medical Aid for Ukraine

SVITOCH Chamber Choir perform Outstanding Ukrainian Songs!

Saturday 21st September 2024, 7pm at All Saints Church,
Victoria Terrace, Leamington Spa, CV31 1AA

Tickets can be bought on the door £10.00 or
www.ticketsource.co.uk/svitoch/medicalaidukraine

Further info: 07504201809

Ukrainian Medical Charity 1203916

This is a different organisation from the Polish Centre



LEAMINGTON GUTTERS

GUTTERING & FASCIA SERVICES

Quotes over the phone
or in person

OUR SERVICES INCLUDE

Gutter & Downpipe Emptying • Gutter, Soffit & Fascia Cleaning • Repairs and Replacements • Conservatory Cleans • Investigation Work

Gutter Empty Out Price list;
Terrace house from £45
Semi-Detached from £60
Detached from £70

CONTACT LUKE TODAY
☎ 07788287003

✉ leamingtonguttersuk@gmail.com



Octotots

Parent and Toddler Group
Thursdays 10.30am – 12.00noon
in term-time

Octotots is an informal weekly
get-together for babies, toddlers and
their grown-ups held at
St Mary Magdalene's church
Vicarage Road, Lillington CV32 7RH

The sessions are FREE! and
Refreshments are served throughout

Pick up a flier where the dates of our
meetings are listed or contact the church
office to find out more

01926 470449 – email

lillingtonparishchurch@gmail.com or

check out our website :

www.lillingtonparishchurch.org

Love Lillington

I have been involved with Love Lillington for several years since taking over the role from Charlotte Sanders. I am the Grants administrator which means when requests are received from referring practitioners, I send them to my colleagues for their opinion.

Over the years I have been asked for many and varied things. A common request is for white goods such as fridges, fridge freezers, washing machines and cookers. Luckily, we have a very good relationship with Walls, the electrical retailer on Cubbington Road. I can phone them with a request and as well as always giving me a good deal, I can rely on them to treat our clients with dignity and respect. They will not only deliver and fit the goods but take away old items as well!

Another common request is for beds and bedding. I was once informed by a school nurse that a child had told her that his bed was broken and consequently, he was not getting enough sleep and was consequently falling behind in his lessons. We were quickly able to supply the bed.

I was asked to arrange for fencing to be erected in a lady's garden. She was trying hard to keep her house and garden in good order and her neighbours were allowing their rubbish spill out into her garden. I arranged a local contractor to supply and fit the fencing.

I have on numerous occasions been asked to supply supermarket gift tokens as families are struggling to clothe their children. The first request I ever received was from a health visitor who was looking after a baby who was sleeping in a travel cot with a hole just large enough for their head to go through. I could understand the urgency for this and supplied a new cot to her within two days.

Sometimes requests are quite straightforward and relatively easy to sort out.

However, recently I received one that was causing me quite a headache. I was asked to find a family a dining room table and chairs as the children had nowhere to do their homework or to sit down to eat meals together. I thought I would have no problem sourcing these items for the family. How wrong I was!

I phoned various charity shops who I knew sold second-hand furniture and contacted Kenilworth Lions who run a furniture sale every Saturday morning. I spent hours searching through Freecycle and Facebook marketplace. I was even asking family and friends if they had a dining table they didn't want.



One day the District Nurses came to visit me and one of them happened to mention that she could not believe how difficult it was to get rid of a piece of furniture. She told me she was at her wits end and was about to take the furniture to the tip. She mentioned what it was and I could not believe my luck! Yes, it was indeed a dining table and six chairs! As if this was not enough, she lived within spitting distance of the recipient who was absolutely delighted. I was thrilled that, at last, I was able to fulfil this request.

I really enjoy my involvement with Love Lillington and quite often find it truly, truly humbling. It is hard to believe that a parish like Lillington can be so divided.

Delia Button

Grants Administrator

Love Lillington

Mary Mags Yarn Café



Dictionary Definition: Yarn

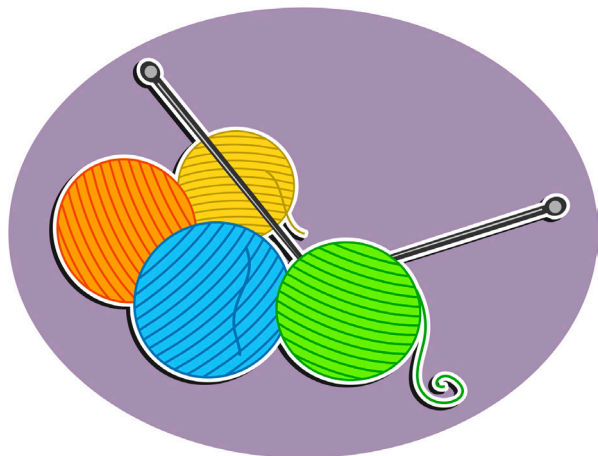
- *thread used for making cloth or for knitting;*
- *a story, usually a long one with a lot of excitement or interest (from which we get 'having a yarn, or having a chat')*

The knitting group is rebranding itself to be a Yarn Café, where you can knit, stitch, crochet, craft or just come and have a yarn. Perhaps you'd like to spend a couple of hours having a tea or coffee, reading a book, playing dominoes, or even just chatting to someone.

When: Second and Fourth Tuesday afternoons of each week, from 2-4pm

Where: The Octagon, St Mary Magdalene's Church, Vicarage Road, Lillington.

Come along and have a yarn ...!



Hire our Octagon!



Are you looking for a venue?
The Octagon is a modern room built adjacent to the church. It can be hired at very competitive rates for small groups, meetings or parties. Please contact the church office on 01926 470449 for details.

Rheams (Plumbing and Heating) Limited

T: (01926) 428 752 E: info@rheams.co.uk

Family run business established in 1967

- GAS SAFE REGISTERED ENGINEERS
- 24 HOUR CALL OUT SERVICE, 7 DAYS A WEEK
- FREE INFORMATIVE CONSULTATIONS
- LARGE/SMALL SCALE RENOVATIONS
- NEW BUILDS
- BOILER REPLACEMENTS/REPAIRS
- (natural gas, LPG and commercial)
- LANDLORDS CHECKS
- POWERFLUSH SERVICE
- BATHROOM INSTALLATIONS
- ALL GENERAL PLUMBING

What's happening

Sat. 14th
September from 10am **Coffee morning – with Open Heritage event in church and the Octagon (10am until 12 noon)**

Sat. 21st Sept at 6pm **Film Night – The Imitation Game. Based on the real-life story of Alan Turing as he tries to crack the German Enigma code with help from fellow mathematicians while attempting to come to terms with his troubled private life.**

Sat. 5th October at 5pm **Curry and Kerala – Sally Druce will be talking about her upbringing in Kerala followed by a curry supper.**

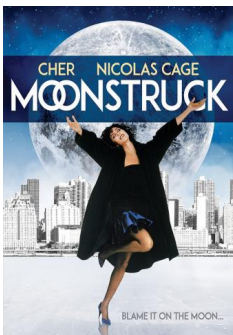
Sat. 12th October from 10am to 12 noon **Coffee morning in the Octagon – raising funds for Love Lillington**

Sat. 12th October at 7.30pm **Autumn Concert – for more information contact Mike King**

Sun. 13th October at 12 noon **Harvest Lunch followed by a Beetle Drive**

Sat. 19th October at 6pm **Film night – “Moonstruck” starting at 6pm with Hot Dogs! Moonstruck stars Cher as a bookkeeper from Brooklyn, New York, who finds herself in a difficult situation when she falls for the brother of the man she has agreed to marry.**

Wednesday 25th September from 10.30 am **Charity Coffee morning in church for Macmillan – raising money to help people living with Cancer**



Join Us Online!

Did you know you can attend our church services online?

If you are unable to join us in-person due to illness, caring or travel, you can still join our weekly services. You can join us live if you are at home, or catch up later if you're otherwise engaged.

You can participate from anywhere in the world and from any time zone. We have regular virtual congregation members from Australia and Germany among others!

We stream our Sunday morning service live at 9.30am and our Wednesday morning service live at 10am. There are booklets on our website so you can follow the service.

You can join us via our website:

www.lillingtonparishchurch.org/streaming

or follow us on Twitch:

www.twitch.tv/lillington_parish_church



Do give it a go - you may be at home but you will feel like you are with us in person and we welcome your participation.

Diana Taulbut





Join us at Star Church!

THIS IS WHAT OUR 11.15 SERVICE LOOKS LIKE
Join us for Star Church Worship every Sunday



FUN * LIVE BAND * REFRESHMENTS * ACTIVE *
FAMILIES * EVERYONE WELCOME

Saturday coffee mornings recipes

Dublin Tea Bread

300° F 150/160° C Gas Mark 2.

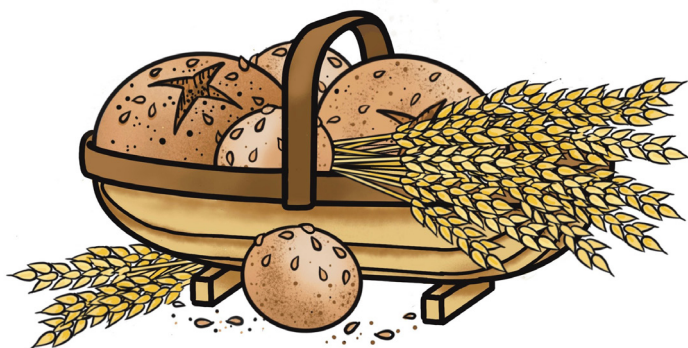
8 oz Wholemeal S.R. Flour (or ordinary if you don't have wholemeal)
8 oz currants/sultanas
2 oz chopped nuts
2 oz glace cherries
2 oz Barbados or Demerara sugar
2 oz Bran *** I don't use bran as it makes the cake a bit dry. I use "nutty" Muesli instead ***
 $\frac{3}{4}$ cup strong cold tea
1 egg



METHOD

Put fruit, nuts, cherries, muesli and sugar in a bowl and pour cold tea over. Leave overnight (or as long as possible) and next morning add 1 beaten egg and 8oz flour and mix well. Bake in well-greased loaf tin for 1 to 1 $\frac{1}{4}$ hours until a skewer or knife inserted into the centre comes out clean.

Carol Innes





APPEAL FOR UNWANTED GIFTS

The coffee morning in October is devoted to raising much needed money for our Love Lillington Grant Fund. This fund enables us to donate new items to the vulnerable, poor and needy in our parish who cannot manage to buy them for themselves.

We would like to receive any unwanted gifts that you may have tucked away in a cupboard or drawer at home. These would be items we can sell at the coffee morning and we would ask that anything donated is in good saleable condition.

If you have anything you can donate for Love Lillington we would be very grateful. There will be a box for items at the back of church.

Many thanks

Christine Butler and Delia Button

A Story about Four People

This was written in my mother's handwriting, on the reverse side of a recipe, which I came across when sorting out some papers.

Anybody, Nobody, Everybody and Somebody

There was an important job to be done and Everybody was asked to do it. Everybody was sure Somebody would do it. Anybody could have done it, but in the end Nobody did it.

Somebody got very angry about that, because it was Everybody's job. Everybody thought Anybody would do it, but Nobody realised that Everybody blamed Somebody when actually Nobody asked Anybody.

Margaret Moore



**Coffee and Crafts Coffee Morning
with Bulb Planting
Supporting**



Saturday 12th October 2024

10.00am – 12.30 pm

Children's Craft Corner, Gift Sale

**Coffee morning offerings of delicious savoury
snacks/cakes/coffee/tea/hot chocolate**

Place : Octagon

Lillington Parish Church

St Mary Magdalene's CV32 7RH

<https://www.lillingtonparishchurch.org>

All Welcome!

Dear Friends,

I hope you are enjoying this month's issue of Crosstalk. We aim to provide interesting and informative articles for you to enjoy, and to this end invite you to contribute towards your Parish magazine.

Have you got a story to tell? We'd love to know your faith story – how did you come to God? Or perhaps you'd like to tell us about an amusing situation which happened to you, or about a cause which is dear to your heart.

Please send articles to me, Alex at:

crosstalk@lillingtonparishchurch.org

by Weds 18th September (October issue)

If you have any questions or have an idea for an article but are unsure what to write, please speak to Sara Snatt sazzysnatt7@icloud.com or Gaynor Cook gaynormail@btinternet.com.

Thanks and I look forward to hearing from you!

Alex Robinson



It's time for a Macmillan Coffee Morning

and you're invited

Let's do whatever it takes
to support people living with cancer.

Place: St Mary Magdalene's Church

Date: Wednesday 25th September

Time: 10.30am – 12.30pm

Contact: Christine Butler 07963 229756
j.butler1christine@gmail.com



MACMILLAN
CANCER SUPPORT



COSTA
COFFEE

FR Registered with
FUNDRAISING
REGULATOR

Help to keep our magazine going!

If you have enjoyed reading this issue of Crosstalk and you are able to, please consider donating a small amount to help with our running costs.

Donate cash

In church - look out for the donation box and mark your cash with 'Crosstalk'

Donate via bank transfer or cheque

Our church bank details are:

Bank: HSBC

Account Name: Lillington PCC

Sort Code: 40 27 06

Account Number: 91308580

Reference: CROSSTALK



Thank you for all you are able to give.



**Lillington Parish
Church**

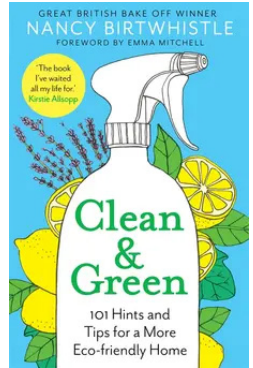




ECO TIP!

Protecting your skin with sunscreen can reduce your chances of sun-caused skin cancer and melanoma. However, while it may protect you, chemical sunscreens put coral reefs in danger. One drop of toxic sunscreen can poison coral reefs the size of six Olympic swimming pools. You're best to replace your chemical sunscreen with a zero-waste sunscreen alternative.

Also, on the odd sunny day we get in the UK, don't forget to seek shade and wear sustainable sunglasses. And for that all-important summer read, why not pick up a book on living sustainably? I love Nancy Birtwhistle's books!



Alex Robinson

Telephone Works

Don Gruettner
 T: 01926 311673
 M: 07525 357348
 E: don.gruettner@btinternet.com



- ✓ Residential telephone engineer
- ✓ Additional sockets for phones & computers
- ✓ Internal & external cables relocated/tidied
- ✓ Telephone extension sockets for Sky digiboxes/Sky+
- ✓ Internal cable faults
- ✓ ADSL activation faults

Former B.T. Engineer with 22 years experience

Phil Edwards
Handyman Services

General Handy Man
NO JOB TOO SMALL!



Whatever you need doing, a dripping tap, some shelves putting up, gutters cleaning, or the garage clearing out, give me a call.

Home: 01926 424485
 Mobile: 07931 812235
 e-mail: philedwardsramg@gmail.com

The gardener and the Vine



JESUS OFTEN TOLD
STORIES WITH
HIDDEN MEANINGS



ONCE HE TOLD HIS FRIENDS ALL
ABOUT A GARDENER.

THE GARDENER'S JOB WAS
TO CARE FOR THE VINES



HE WOULD LOOK AT EACH
BRANCH CAREFULLY..

... AND IF IT WAS PRODUCING
GOOD FRUIT, HE WOULD CARE
FOR IT AND NOURISH IT.



IF IT WAS PRODUCING BAD
FRUIT...

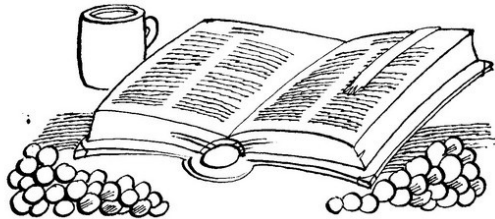


...OR NO FRUIT AT
ALL...



...THEN THE GARDENER WOULD
CHOP IT OFF, AND BURN IT IN
THE FIRE!!

JESUS WANTED HIS FRIENDS TO SHARE
THE GOOD NEWS - THAT'S LIKE THE
VINE BEARING GOOD FRUIT.



YOU CAN READ THIS SPECIAL PARABLE IN JOHN'S
GOSPEL, CHAPTER 15.



HARVEST

THANKSGIVING

Services in September

1 Sept.	Trinity 14	9.30am 11.15am 6.00pm	Holy Communion (in church & on line) All Age Communion (in church) Evening Service (in church)
8 Sept	Trinity 15	9.30am 11.15am	Holy Communion (in church & on line) Star Church (in church)
15 Sept	Trinity 16 Thank You Service	9.30am 11.15am	Holy Communion (in church & on line) Star Church (in church)
22 Sept	LOVE LILLINGTON	9.30am 11.15am	Holy Communion (in church & on line) Star Church (in church)
29 Sept	Trinity 18	9.30am 11.15am	Holy Communion (in church & on line) Star Church (in church)

Weekday Services in September

Wednesdays Holy Communion **in church** and online at 10.00am on 4, 11, 18 & 25 September

From the church records (July)

BAPTISMS: Noah Andrew Hardy

WEDDINGS: None

FUNERALS: None



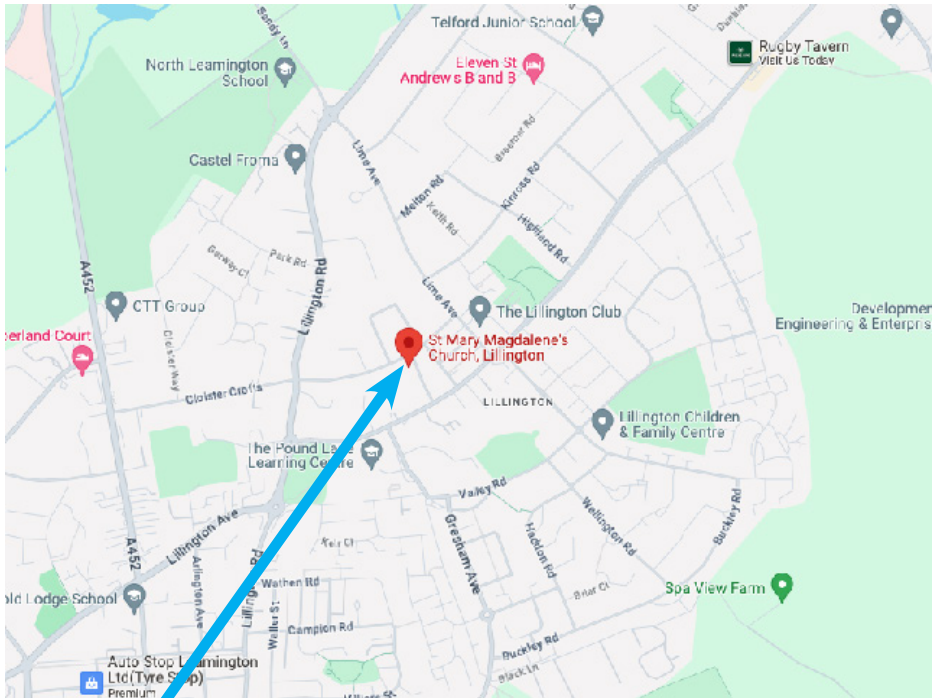
Services are streamed live
and are also available afterwards on the website
www.lillingtonparishchurch.org

For Funeral, Baptism and Wedding enquiries, please
contact Rev. William Smith on 01926 316475 or email [wms.
smith@btinternet.com](mailto:wms.smith@btinternet.com)

For general enquiries please contact the church office by
telephone on 01926 470449 or email
office@lillingtonparishchurch.org. Outside of office hours,
please leave a message on the answer phone and we will
return your call.



FIND US



We are on the corner of Church Lane and Vicarage Road
in Lillington!

For directions, use Google Maps or email
office@lillingtonparishchurch.org

CONTACT US

Please do contact us with any questions or queries, or
just to say hello!



Church Office & General Enquiries
Wendy Driscoll
office@lillingtonparishchurch.org
01926 470449

The Church Office is normally open 9:30am to 1pm,
Monday, Tuesday and Thursday

Vicar
Rev William Smith
01926 316475

Churchwardens

Sally Druce
sally@lillingtonparishchurch.org
07933 295350

Sarah Boad
sarah@lillingtonparishchurch.org

Love Lillington
Christine Butler
lovelillingtonaction@lillingtonparishchurch.org
07963 229756



Follow us on Facebook!
facebook.com/LillingtonParishChurch



*Who shall ascend the hill of the Lord?
And who shall stand in his holy place?
Those who have clean hands and pure hearts.*
Psalm 24: 3-4

Parish website:
www.lillingtonparishchurch.org

 THE CHURCH
OF ENGLAND